

EQUIP. TYPE *SM-B-249264* EXP. NO.

*COL 595-481-00*

NOTICE: WHEN GOVERNMENT DRAWINGS, SPECIFICATIONS, OR OTHER DATA ARE USED FOR ANY PURPOSE OTHER THAN IN CONNECTION WITH A DEFINITELY RELATED GOVERNMENT PROCUREMENT OPERATION, THE UNITED STATES GOVERNMENT THEREBY INCURS NO RESPONSIBILITY NOR ANY OBLIGATION WHATSOEVER; AND THE FACT THAT THE GOVERNMENT MAY HAVE FORMULATED, FURNISHED, OR IN ANY WAY SUPPLIED THE SAID DRAWINGS, SPECIFICATIONS, OR OTHER DATA IS NOT TO BE REGARDED BY IMPLICATION OR OTHERWISE AS IN ANY MANNER LICENSING THE HOLDER OR ANY OTHER PERSON OR CORPORATION, OR CONVEYING ANY RIGHTS OR PERMISSION TO MANUFACTURE, USE, OR SELL ANY PATENTED INVENTION THAT MAY IN ANY WAY BE RELATED THERETO.

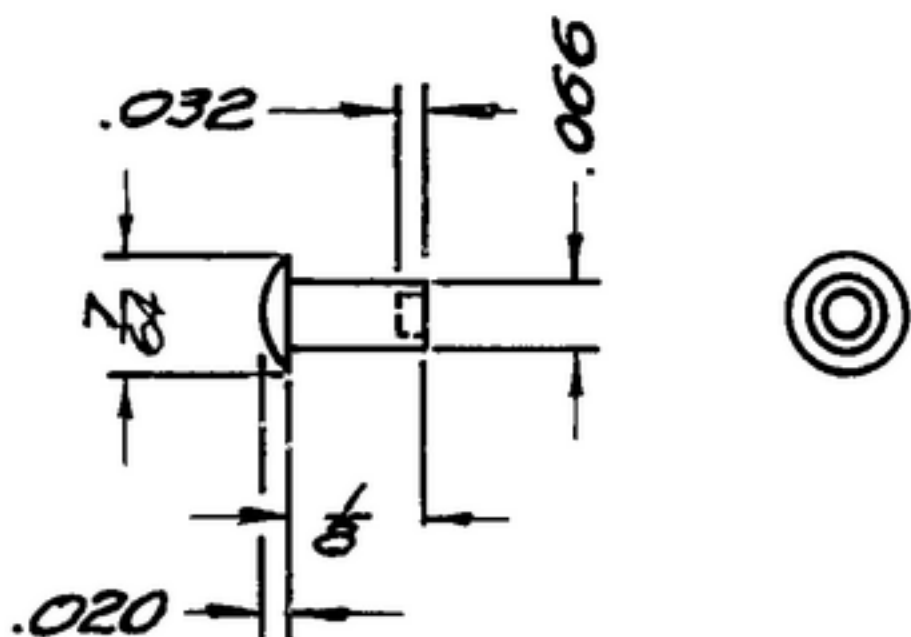
THIS DOCUMENT HAS BEEN PURCHASED BY THE GOVERNMENT AND MAY BE REPRODUCED AND USED IN CONNECTION WITH ANY GOVERNMENT PROCUREMENT OR MAINTENANCE OPERATION.

\* FOR INFORMATION ONLY. CONTRACTOR MAY AT HIS OPTION DEVIATE FROM THESE PROCESS DETAILS.

*\* SWE APPROVAL*  
*SYM PR1004E-10*

REVISIONS

SYM	DESCRIPTION	DATE	APPROVAL
A <sub>1</sub>	A <sub>1</sub> -ADDED FINISH NOTE.	6 NOV. 59	42428-PC-59-A1-51 REV'D PME



NOTES:

1. MAY BE AS SUPPLIED BY CHICAGO RIVET & MACHINE CO., BELLWOOD, ILL., OR EQUAL, PROVIDING IT MEETS THE FOLLOWING REQUIREMENTS AND DIMENSIONS SHOWN.

MATERIAL: 35 ALUMINIUM ALLOY

**(A<sub>1</sub>)** FINISH: E511 PER SPEC MIL-F-14072

COLLINS PART NO.	ITEM	QTY	PART NO.	DESCRIPTION	MATL	MATL SPEC
LIST OF MATERIAL						
COLLINS PART NO. <i>559-0218-002</i>						

DRAWN <i>JENNETT</i>			CHECKED <i>[Signature]</i>	APPROVED	COLLINS-RADIO-CO. DESAR-RAPID-IOWA <i>14214-PH-51-93</i>	DEPARTMENT OF THE ARMY SIGNAL CORPS ENGINEERING LABORATORIES  FORT MONMOUTH NEW JERSEY  <i>RIVET-TUBULAR</i>  <i>SM-B-249264</i>
UNLESS OTHERWISE SPECIFIED: DECIMAL DIMENSIONS INCLUDING HOLE SIZES MAY VARY ±.005 FRACTIONAL DIMENSIONS INCLUDING HOLE SIZES MAY VARY ±1/64 MACHINED ANGLES MAY VARY ±.1° SHEARED ANGLES MAY VARY ±.25° BROKEN ANGLES MAY VARY ±1.° ECCENTRICITY BETWEEN ANY DIAMETERS ON THE SAME CENTERLINE SHALL NOT EXCEED .010 TOTAL INDICATOR READING. ALL DIMENSIONS ARE FINISH DIMENSIONS INCLUDING APPLIED FINISH AND ARE GIVEN IN INCHES.			SIGNAL CORPS			
559-0379-002-6 SM-B-249264 SCDL-248775			REVIEWED <i>PME</i>			
COLLINS NO. NEXT ASSY USED ON			APPROVED <i>HLV</i> <i>PME</i>			
APPLICATION			DATE <i>15 DEC 56</i> SCALE <i>A/1</i>			